



pelli e tessuti: leathers and fabrics

Cat. A**Guatemala****Composizione**

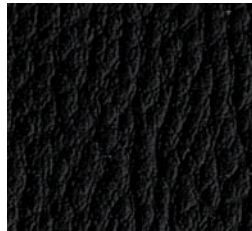
87,5% PVC - 12,5% cotone

Peso

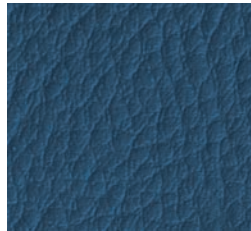
890 gr./mtl.

Caratteristiche

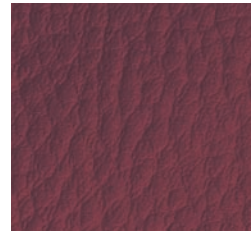
Ignifugo: Classe 1 (UNI 9175)



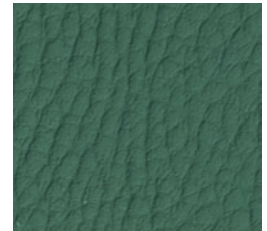
13AG22



13AG26



13AG27



13AG25

Composition

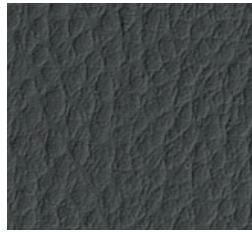
87,5% PVC - 12,5% cotton

Weight

890 gr./lm.

Characteristics

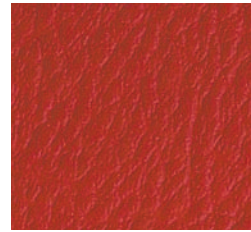
Fireproof: BS 5852



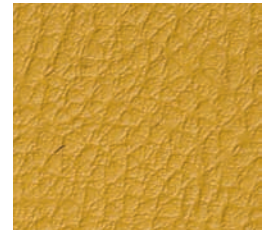
13AG21



13AG00



13AG07



13AG30

Cat. A**Alma rif. Madrid****Composizione**

100% Poliolefinica

Peso

320 gr./mtl.

CaratteristicheIgnifugo: Classe 1 (UNI 9175),
EN 1021 (Part. 1-2)**Alma ref. Madrid****Composition**

100% Polyolefinic

Weight

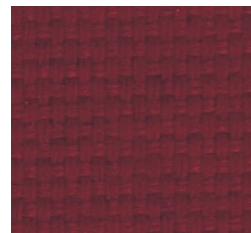
320 gr./lm.

CharacteristicsFireproof: California Test,
EN 1021 (Part. 1-2)

13AA02



13AA36



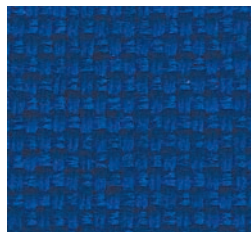
13AA47



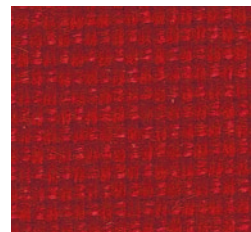
13AA66



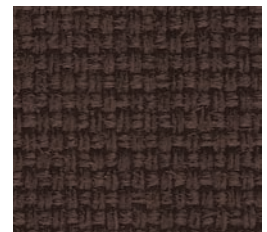
13AA21



13AA26



13AA07



13AA13

Cat. A**Alma rif. Venere****Composizione**

100% Polipropilene FR

Peso

350 gr./mtl.

CaratteristicheIgnifugo: Classe 1 (UNI 9175),
EN 1021 (Part. 1-2)**Alma ref. Venere****Composition:**

100% Polypropylene FR

Weight

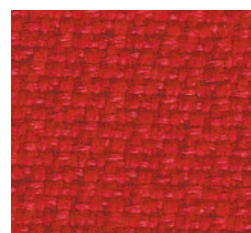
350 gr./lm.

CharacteristicsFireproof: BS 5852,
EN 1021 (Part. 1-2)

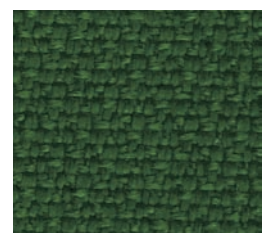
13AA22



13AA46



13AA27



13AA15



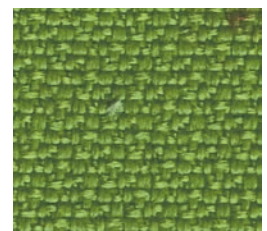
13AA32



13AA56



13AA20



13AA25

La serie **Bursa Kit** in pronta consegna
utilizza i seguenti rivestimenti:

Cat. A Alma rif. Madrid

colori 13AA02, 13 AA36, 13AA26 e 13 AA07

Cat. A Alma rif. Venere

colore 13AA20

Quick ship **Bursa Kit** models are
upholstered with the following fabrics:

Cat. A Alma ref. Madrid

colours 13AA02, 13 AA36, 13AA26 e 13 AA07

Cat. A Alma ref. Venere

colour 13AA20

Cat. A**York****Composizione**

100% Poliolefinica

Peso

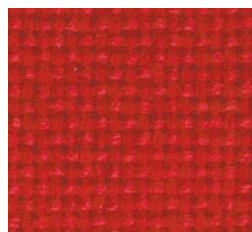
340 gr./mtl.

CaratteristicheIgnifugo: Classe 1 (UNI 9175),
EN 1021 (Part. 1-2)

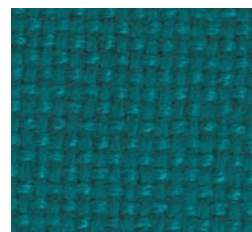
13AY03



13AY26



13AY47



13AY25

Composition

100% Polyolefinic

Weight

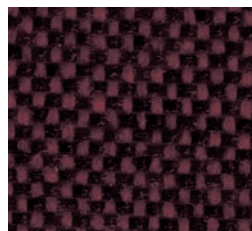
340 gr./lm.

CharacteristicsFireproof: California Test,
EN 1021 (Part. 1-2)

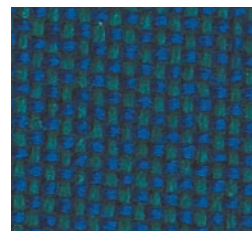
13AY48



13AY46



13AY57



13AY35

Cat. B**Belem****Composizione**

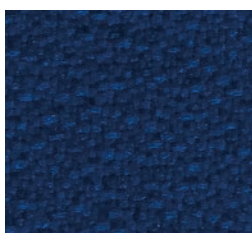
100% Poliestere - TREVIRA CS

Peso

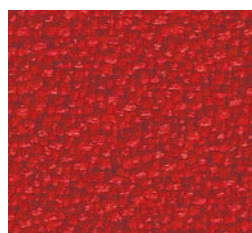
420 gr./mtl.

CaratteristicheIgnifugo: Classe 1 (UNI 9175),
EN 1021 (Part. 1-2)

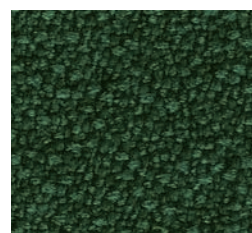
13BB02



13BB06



13BB07



13BB05

Composition

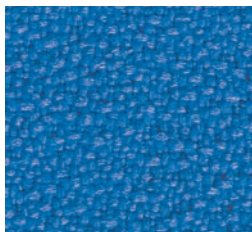
100% Polyester - TREVIRA CS

Weight

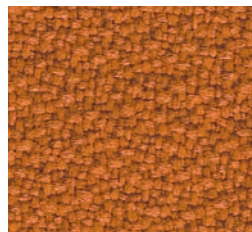
420 gr./lm.

CharacteristicsFireproof: BS 5852,
EN 1021 (Part. 1-2)

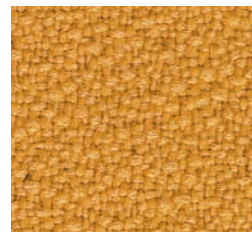
13BB22



13BB16



13BB40



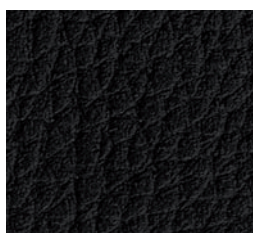
13BB30

Cat. B**Merida****Composizione**

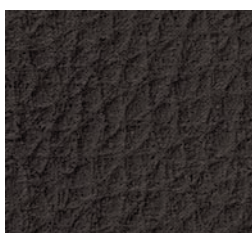
23% Poliuretano - 77% Cotone

Peso

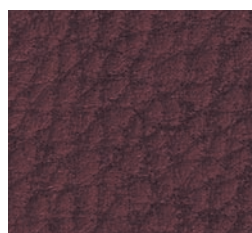
335 gr./mtl.

CaratteristicheTraspirante, ecologica,
biodegradabile

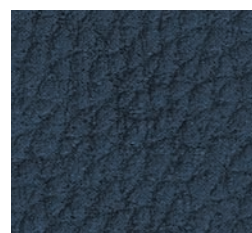
13BM32



13BM43



13BM34



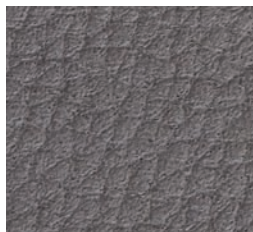
13BM36

Composition:

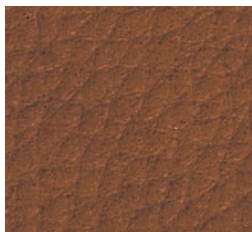
23% Polyurethane - 77% Cotton

Weight

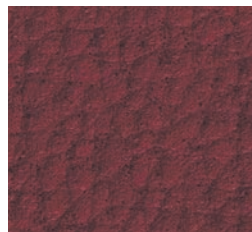
335 gr./lm.

CharacteristicsBreathable, ecological,
biodegradable

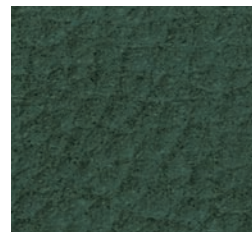
13BM52



13BM38



13BM37



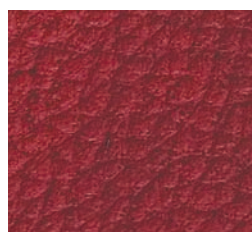
13BM35



13BM42



13BM20



13BM57



13BM60

Cat. B**Evora****Composizione**

100% Poliestere - TREVIRA CS

Peso

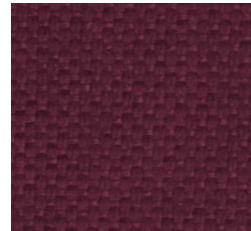
365 gr./mtl.

CaratteristicheIgnifugo: Classe 1 (UNI 9175),
EN 1021 (Part. 1-2)

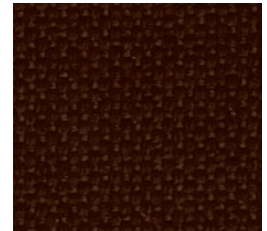
13BE02



13BE06



13BE04



13BE03

Composition

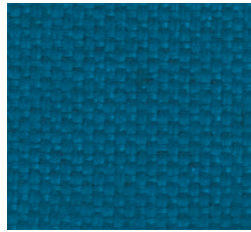
100% Polyester - TREVIRA CS

Weight

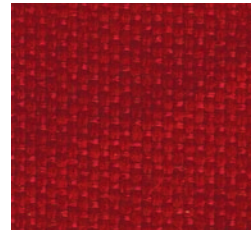
365 gr./lm.

CharacteristicsFireproof: BS 5852,
EN 1021 (Part. 1-2)

13BE12



13BE16



13BE07



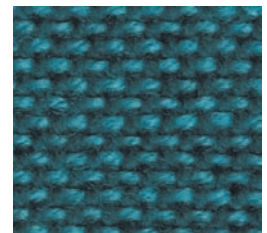
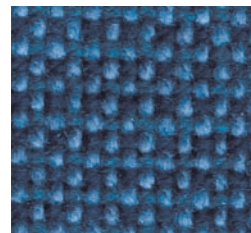
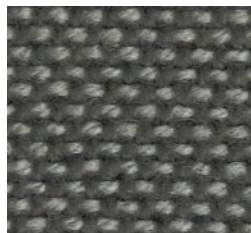
13BE05

Cat. C**Zara****Composizione**

100% Poliestere - TREVIRA CS

Peso

670 gr./mtl.

CaratteristicheIgnifugo: Classe 1 (UNI 9175),
EN 1021 (Part. 1-2)

13CZ12

13CZ16

13CZ16

13CZ25



13CT02



13CT06



13CT47



13CT05

Cat. C**Trevi****Composizione**

100% Poliestere - TREVIRA CS

Peso

630 gr./mtl.

CaratteristicheIgnifugo: Classe 1 (UNI 9175),
EN 1021 (Part. 1-2)**Composition:**

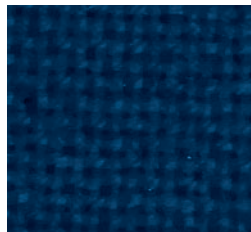
100% Polyester - TREVIRA CS

Weight

630 gr./lm.

CharacteristicsFireproof: BS 5852,
EN 1021 (Part. 1-2)

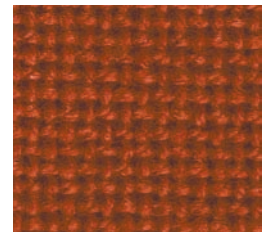
13CT32



13CT16



13CT07



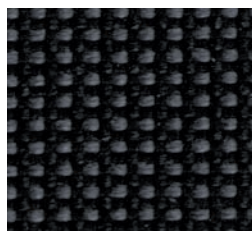
13CT20

Cat. C**Manaus****Composizione**

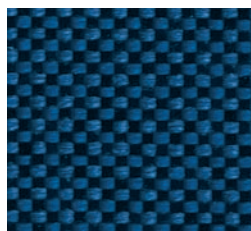
100% Poliestere - TREVIRA CS

Peso

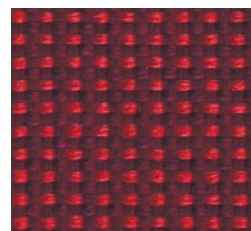
440 gr./mtl.

CaratteristicheIgnifugo: Classe 1 (UNI 9175),
EN 1021 (Part. 1-2)

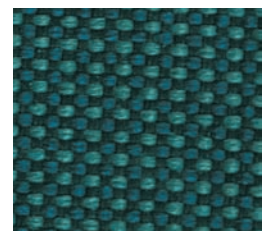
13CM12



13CM26



13CM17



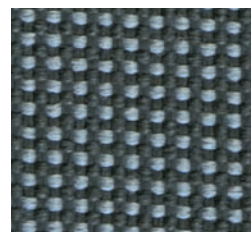
13CM25

Composition:

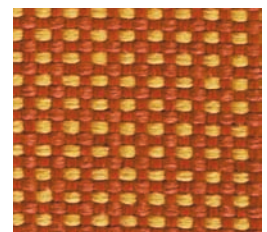
100% Polyester - TREVIRA CS

Weight

440 gr./lm.

CharacteristicsFireproof: BS 5852,
EN 1021 (Part. 1-2)

13CM32



13CM20

Cat. C**Antistatico****Composizione**

99,5% Poliolefinica
0,5% Fibra di carbonio

Peso

340 gr./mtl.

Caratteristiche

Ignifugo: Classe 1 (UNI 9175),
EN 1021 (Part. 1-2)

Composition

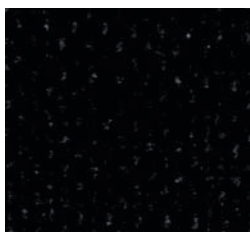
99,5% Polyolefinic
0,5% Carbon fibre

Weight

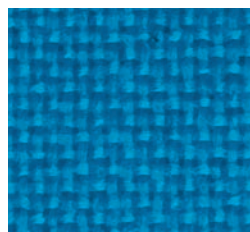
340 gr./lm.

Characteristics

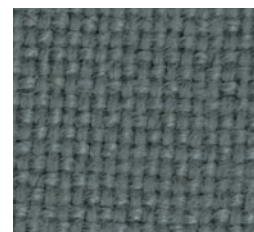
Fireproof:
EN 1021 (Part. 1-2)



13CA02



13CA06



13CA12

Cat. C**Santos****Composizione**

36% Poliuretano - 64% Cotone

Peso

420 gr./mtl.

Caratteristiche

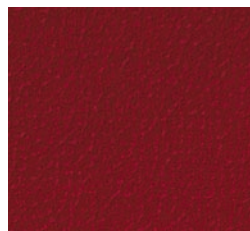
Traspirante, ecologica, biodegradabile, ignifuga: BS 5852



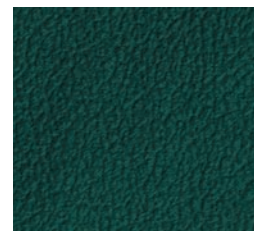
13CS02



13CS06



13CS07



13CS05

Composition

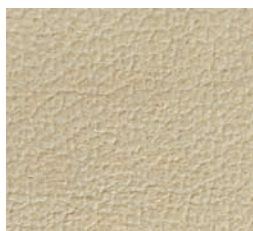
36% Polyurethane - 64% Cotton

Weight

420 gr./lm.

Characteristics

Breathable, ecological, biodegradable, fireproof: BS 5852



13CS10



13CS30



13CS20



13CS03

Cat. D**Pola****Composizione**

100% Poliestere - TREVIRA CS

Peso

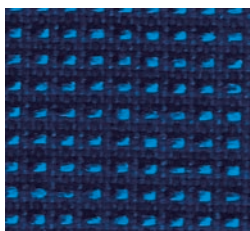
420 gr./mtl.

Caratteristiche

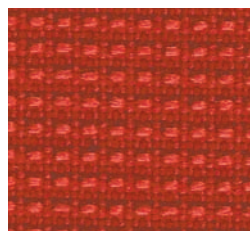
Ignifugo: Classe 1 (UNI 9175),
EN 1021 (Part. 1-2)



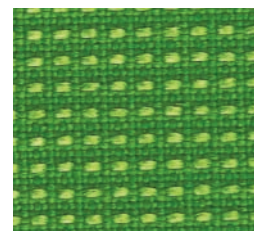
13DP02



13DP06



13DP07



13DP05

Composition:

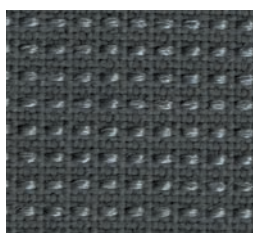
100% Polyester - TREVIRA CS

Weight

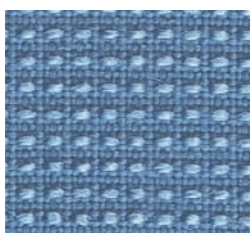
420 gr./lm.

Characteristics

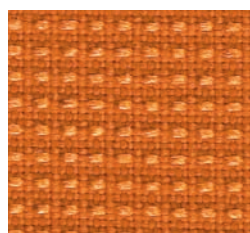
Fireproof: BS 5852,
EN 1021 (Part. 1-2)



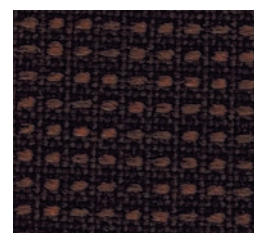
13DP12



13DP16



13DP20



13DP03

Cat. D**Elba****Composizione**

100% Poliestere - TREVIRA CS

Peso

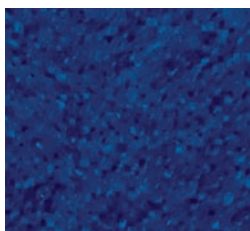
510 gr./mtl.

Caratteristiche

Ignifugo: Classe 1 (UNI 9175),
EN 1021 (Part. 1-2)



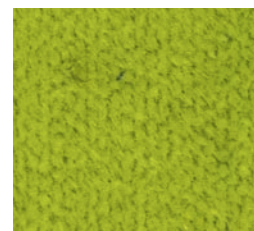
13DE02



13DE06



13DE07



13DE05

Composition:

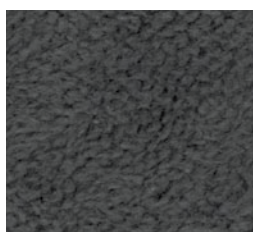
100% Polyester - TREVIRA CS

Weight

510 gr./lm.

Characteristics

Fireproof: BS 5852,
EN 1021 (Part. 1-2)



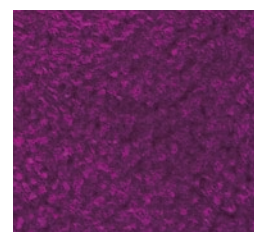
13DE12



13DE38



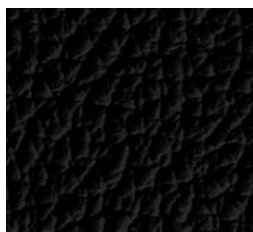
13DE20



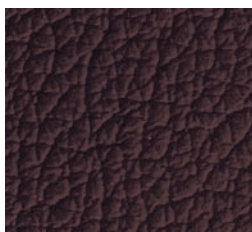
13DE28

Cat. E**Pelle Naturale****Caratteristiche**

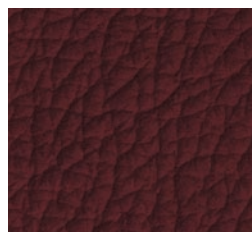
Vera pelle: spessore 0,9/1,0 mm., conciata al cromo, tinta in botte all'anilina, smerigliata e rifinita con resine poliuretatiche



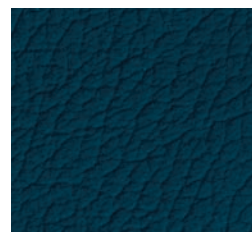
13EP02



13EP43



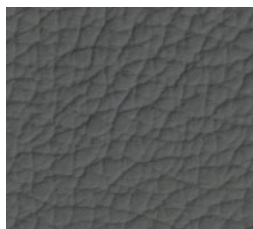
13EP34



13EP36

Natural Leather**Characteristics**

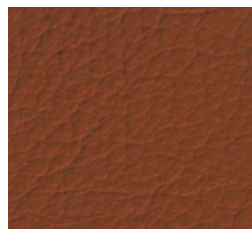
Real leather: thickness 0,9/1,0 mm., chromium tanned, dyed in aniline barrel, emiered and finished with polyurethane resins



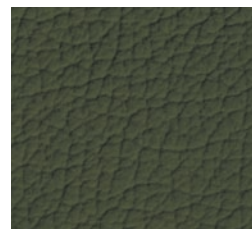
13EP22



13EP10



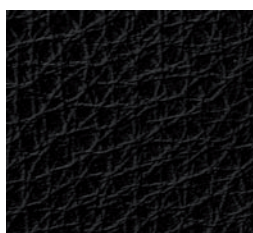
13EP17



13EP25

Cat. F**Pelle Extra****Caratteristiche**

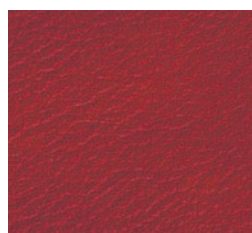
Vera pelle pieno fiore: spessore 1,0/1,1 mm., conciata al cromo, tinta in botte all'anilina, grana naturale rifinita con resine in dispersione acquosa e fissate con nitrocellulosa e poliuretano



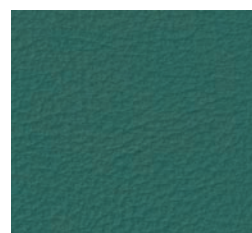
13FP32



13FP66



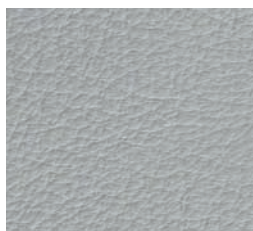
13FP07



13FP55

Extra Leather**Characteristics**

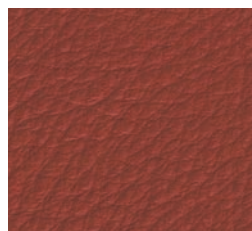
Top quality real leather: thickness 1,0/1,1 mm., chromium tanned, dyed in aniline barrel, natural grain, finished with resins in watery solutions and fixed with nitrocellulose and polyurethane



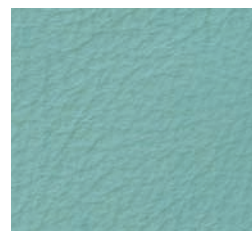
13FP12



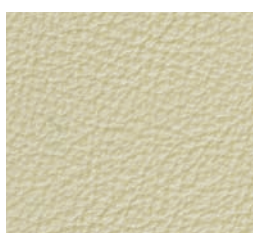
13FP76



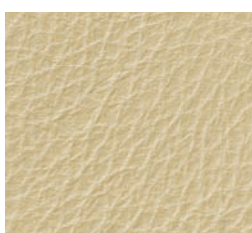
13FP57



13FP65



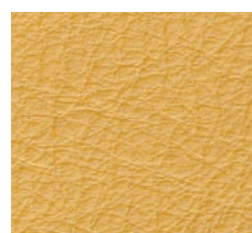
13FP00



13FP28



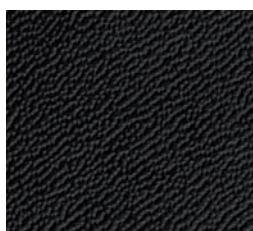
13FP53



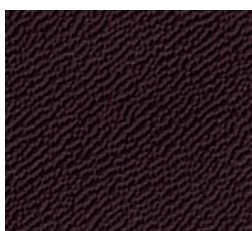
13FP40

Cat. G**Cuoio Cartagena****Caratteristiche**

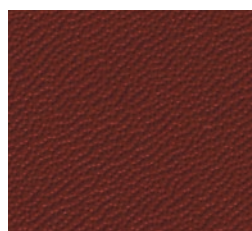
Spessore 1,8/2,0 mm., riconcia mista, rifinitura diretta con resine acriliche e poliuretatiche, stampa fiore



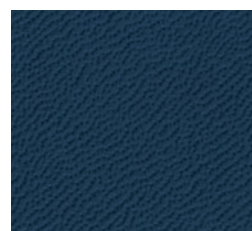
13GC02



13GC13



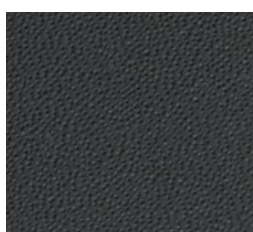
13GC07



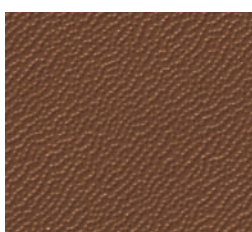
13GC06

Cuoio Cartagena**Characteristics**

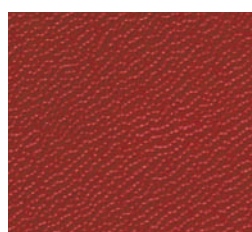
Hard leather: thickness 1,8/2,0 mm., mixed retanning, finished with acrylic and polyurethane resins, pick design



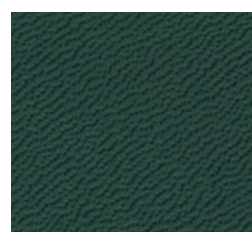
13GC12



13GC03



13GC17



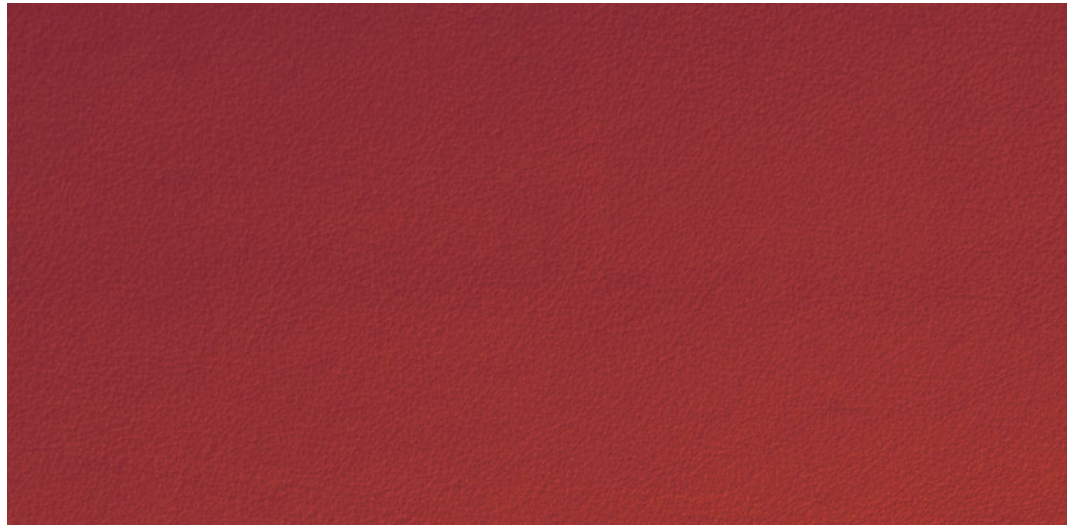
13GC05

Cat. F**Pelle Extra****Caratteristiche**

Vera pelle pieno fiore: spessore 1,0/1,1 mm., conciata al cromo, tinta in botte all'anilina, grana naturale rifinita con resine in dispersione acquosa e fissate con nitrocellulosa e poliuretano

Extra Leather**Characteristics**

Top quality real leather: thickness 1,0/1,1 mm., chromium tanned, dyed in aniline barrel, natural grain, finished with resins in watery solutions and fixed with nitrocellulose and polyurethane



13FP07

Rete Schienale**Composizione**

100% Poliestere ad alta resistenza

Caratteristiche

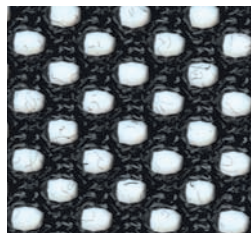
Membrana elastica portante e traspirante, ignifuga: EN 1021 (Part. 1-2)

Backrest Mesh**Composition**

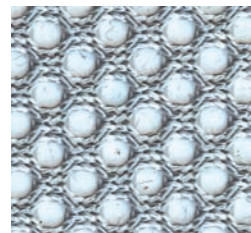
100% High tenacy polyester

Characteristics

Self-supporting and elastic transparent membrane, fireproof: EN 1021 (Part. 1-2)



Nero - Black



Grigio - Grey



Bianco - White

Colori plastica**Composizione**

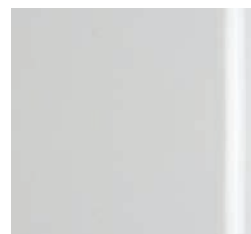
Polipropilene, poliammide o ABS

Plastic colours**Composition**

Polypropylene, polyamide or ABS



Nero - Black



Grigio - Grey RAL 7047



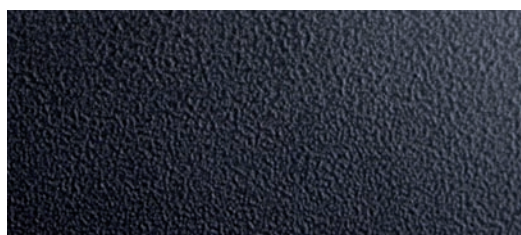
Blu - Blue RAL 5002

Finiture metalli**Caratteristiche**

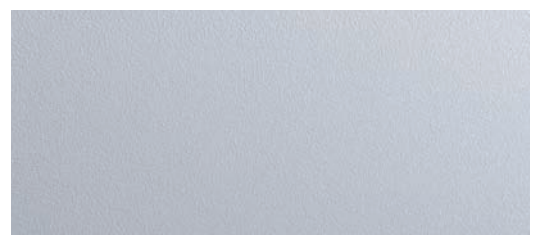
Verniciatura: polveri epossidiche applicate elettrostaticamente

Metal finishing**Characteristics**

Painting: epoxy powders electrostatically fixed



Nero - Black



Argento - Silver RAL 9006

Finiture legno**Caratteristiche**

Tinta a solvente, rifinita con vernici acriliche monocomponente

Wood finishing**Characteristics**

Solvent stained finishing refined with acrylic self-contained paint



Noce - Walnut



Rovere - Oak



Wengè